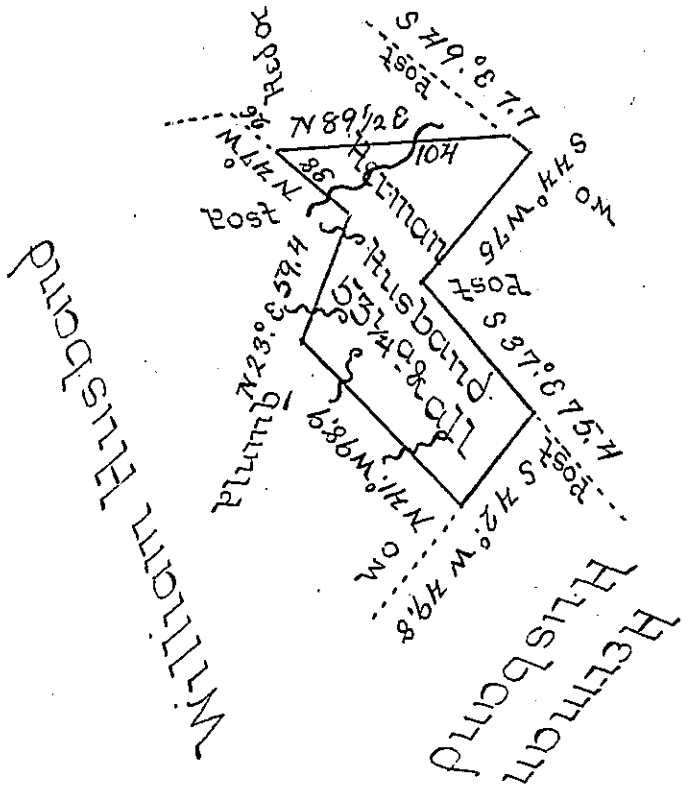


Thomas McCall



Samuel Gilpin

Waters of the
 Situate on the East Branch of Coxes Creek in Mil-
 ford Township Somerset County (formerly Bedford
 County) and surveyed the 1st day of July 1796 in pur-
 suance of a Warrant dated the 23rd day of January
 1793

R. Alexander McClean Deputy

To Daniel Brodhead Esquire }
 Surveyor General }

IN TESTIMONY that the above is a copy of the original remaining on file in
 the Department of Internal Affairs of Pennsylvania, made
 conformably to an Act of Assembly approved the 16th day of
 February, 1833, I have hereunto set my Hand and caused
 the Seal of said Department to be affixed at Harrisburg,
 this ninth day of February 1905.

Isaac S. Penning
 Secretary of Internal Affairs.